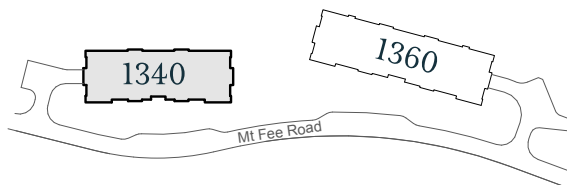
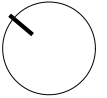


1340

MOUNT FEE ROAD

FIRST FLOOR PLAN

NORTH



CHEAKAMUSCROSSING.COM

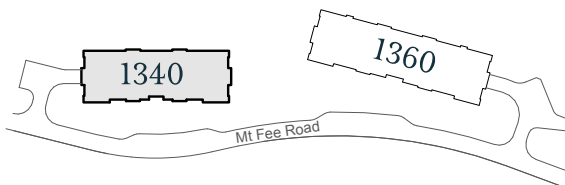
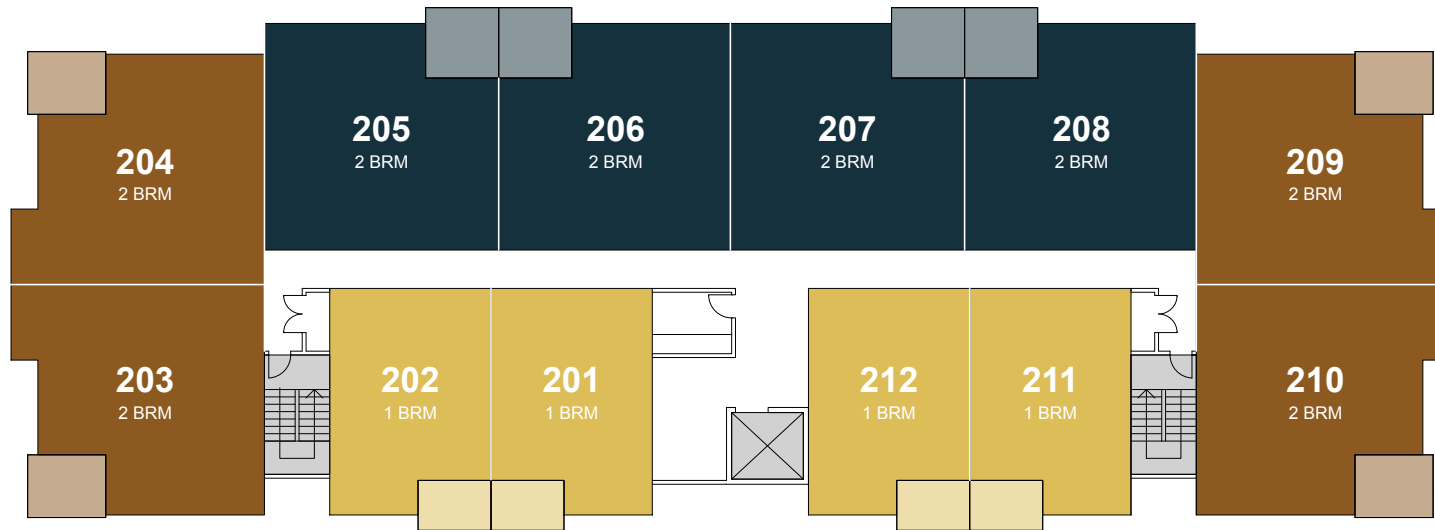
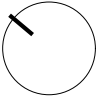
The developer reserves the right to make changes and modifications to the information contained herein. Maps, views, photography and renderings are representational only and are not necessarily accurate, and final design, construction and features may differ. Floor plans, areas, layouts, finishes, prices and availability are subject to change without notice. This is not an offering for sale as an offering can only be made after the filing of a disclosure statement with the BC Financial Services Authority, and only in jurisdictions where qualified in accordance with applicable local laws. For a copy of the disclosure statement, please contact Ray Longmuir of Whistler Real Estate Ltd. at 1.800.667.2993. E. & O. E.

1340

MOUNT FEE ROAD

SECOND FLOOR PLAN

NORTH



CHEAKAMUSCROSSING.COM

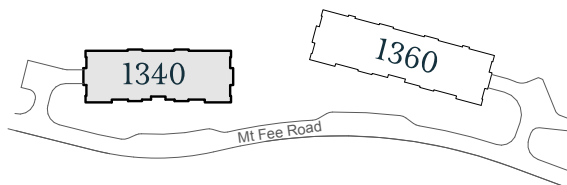
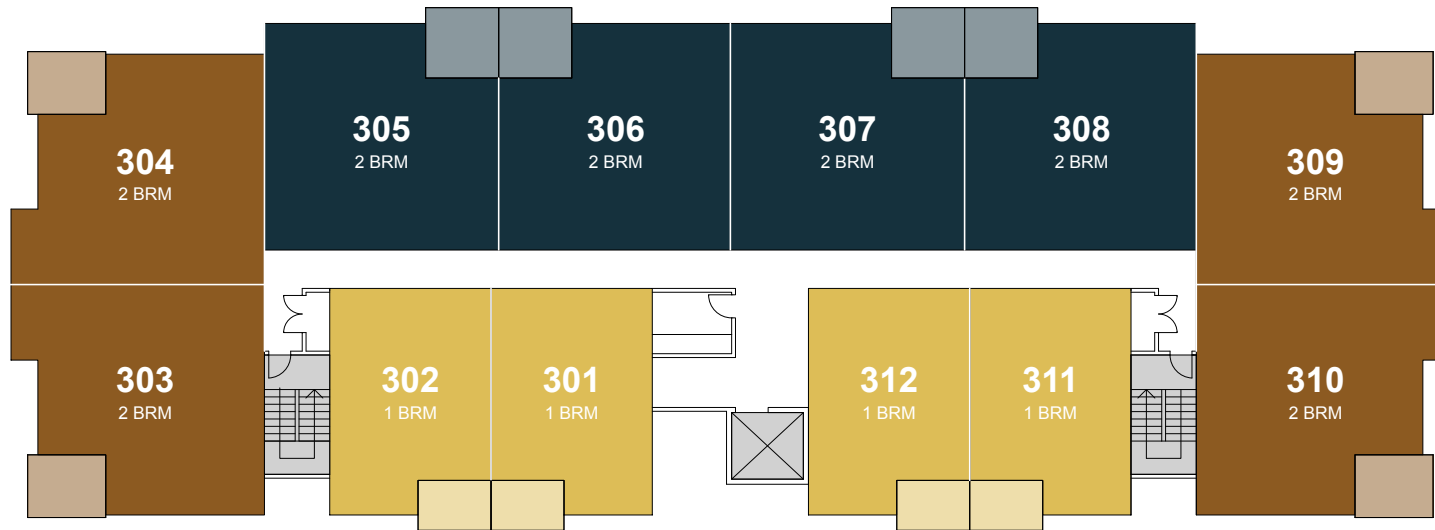
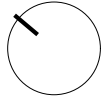
The developer reserves the right to make changes and modifications to the information contained herein. Maps, views, photography and renderings are representational only and are not necessarily accurate, and final design, construction and features may differ. Floor plans, areas, layouts, finishes, prices and availability are subject to change without notice. This is not an offering for sale as an offering can only be made after the filing of a disclosure statement with the BC Financial Services Authority, and only in jurisdictions where qualified in accordance with applicable local laws. For a copy of the disclosure statement, please contact Ray Longmuir of Whistler Real Estate Ltd. at 1.800.667.2993. E. & O. E.

1340

MOUNT FEE ROAD

THIRD FLOOR PLAN

NORTH



CHEAKAMUSCROSSING.COM

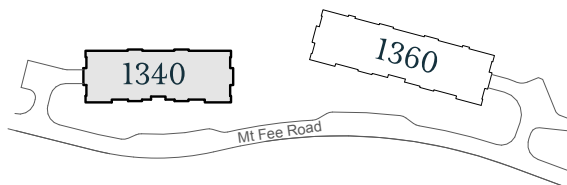
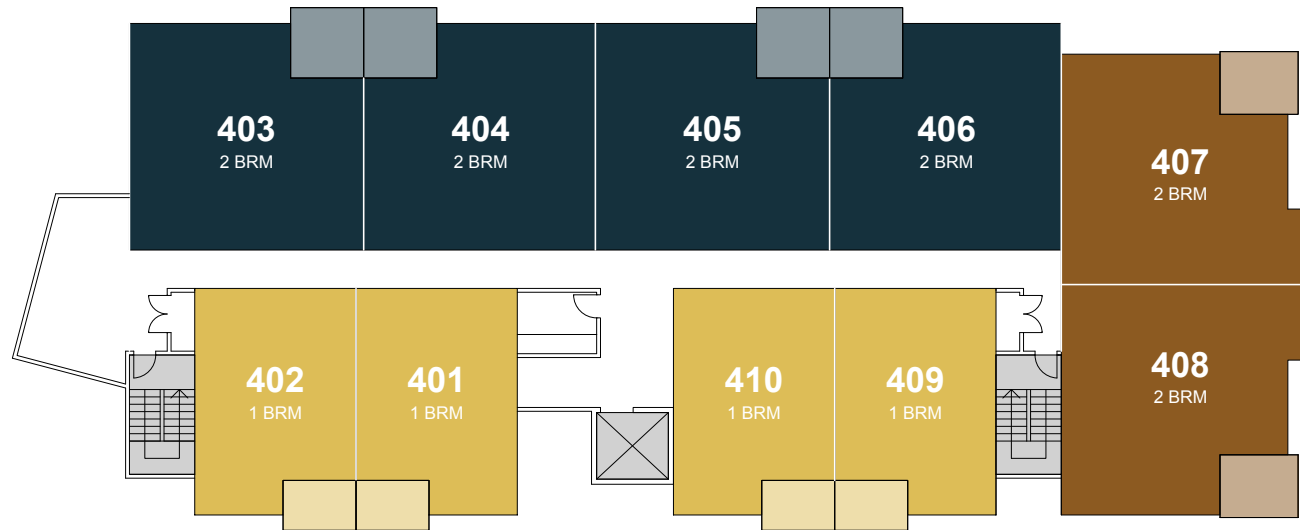
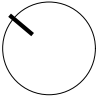
The developer reserves the right to make changes and modifications to the information contained herein. Maps, views, photography and renderings are representational only and are not necessarily accurate, and final design, construction and features may differ. Floor plans, areas, layouts, finishes, prices and availability are subject to change without notice. This is not an offering for sale as an offering can only be made after the filing of a disclosure statement with the BC Financial Services Authority, and only in jurisdictions where qualified in accordance with applicable local laws. For a copy of the disclosure statement, please contact Ray Longmuir of Whistler Real Estate Ltd. at 1.800.667.2993. E. & O. E.

1340

MOUNT FEE ROAD

FOURTH FLOOR PLAN

NORTH



CHEAKAMUSCROSSING.COM

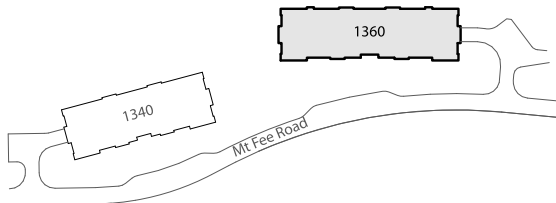
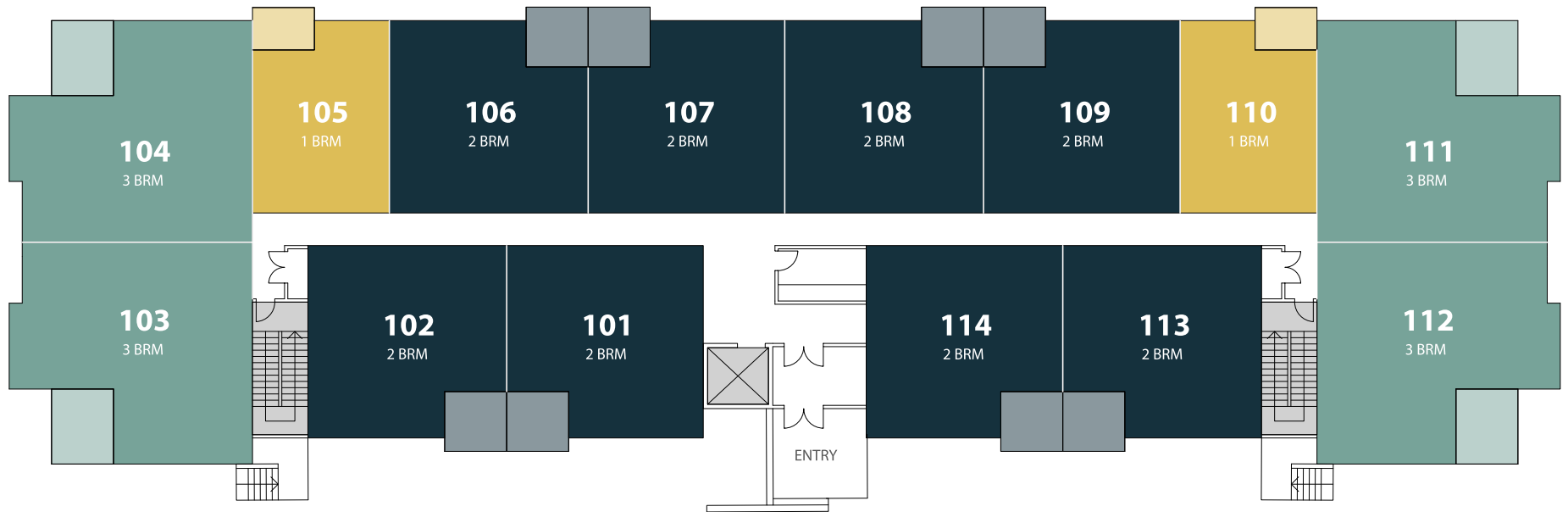
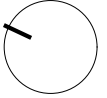
The developer reserves the right to make changes and modifications to the information contained herein. Maps, views, photography and renderings are representational only and are not necessarily accurate, and final design, construction and features may differ. Floor plans, areas, layouts, finishes, prices and availability are subject to change without notice. This is not an offering for sale as an offering can only be made after the filing of a disclosure statement with the BC Financial Services Authority, and only in jurisdictions where qualified in accordance with applicable local laws. For a copy of the disclosure statement, please contact Ray Longmuir of Whistler Real Estate Ltd. at 1.800.667.2993. E. & O. E.

1360

MOUNT FEE ROAD

FIRST FLOOR PLAN

NORTH



CHEAKAMUSCROSSING.COM

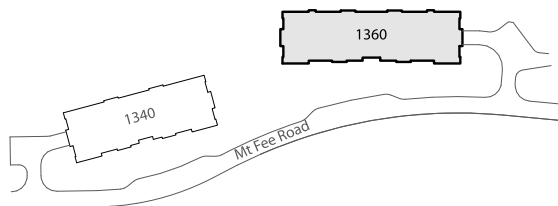
The developer reserves the right to make changes and modifications to the information contained herein. Maps, views, photography and renderings are representative only and are not necessarily accurate, and final design, construction and features may differ. Floor plans, areas, layouts, finishes, prices and availability are subject to change without notice. This is not an offering for sale as an offering can only be made after the filing of a disclosure statement with the BC Financial Services Authority, and only in jurisdictions where qualified in accordance with applicable local laws. For a copy of the disclosure statement, please contact Ray Longmuir of Whistler Real Estate Ltd. at 1.800.667.2993. E. & O. E.

1360

MOUNT FEE ROAD

SECOND FLOOR PLAN

NORTH



CHEAKAMUSCROSSING.COM

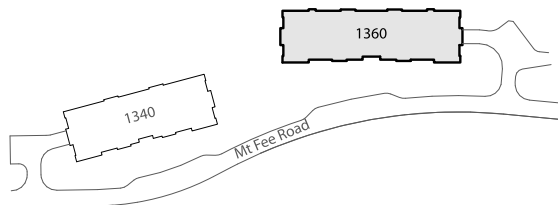
The developer reserves the right to make changes and modifications to the information contained herein. Maps, views, photography and renderings are representational only and are not necessarily accurate, and final design, construction and features may differ. Floor plans, areas, layouts, finishes, prices and availability are subject to change without notice. This is not an offering for sale as an offering can only be made after the filing of a disclosure statement with the BC Financial Services Authority, and only in jurisdictions where qualified in accordance with applicable local laws. For a copy of the disclosure statement, please contact Ray Longmuir of Whistler Real Estate Ltd. at 1.800.667.2993. E. & O. E.

1360

MOUNT FEE ROAD

THIRD FLOOR PLAN

NORTH



CHEAKAMUSCROSSING.COM

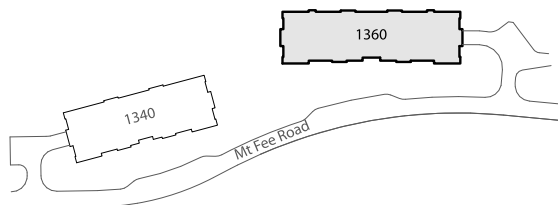
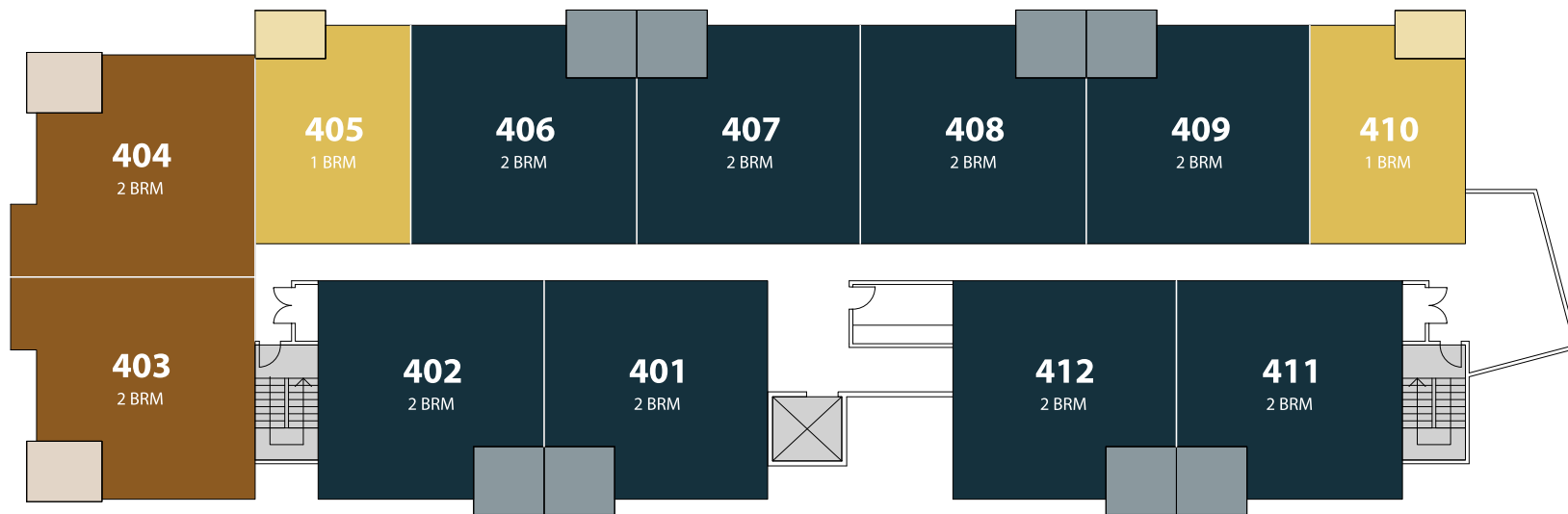
The developer reserves the right to make changes and modifications to the information contained herein. Maps, views, photography and renderings are representational only and are not necessarily accurate, and final design, construction and features may differ. Floor plans, areas, layouts, finishes, prices and availability are subject to change without notice. This is not an offering for sale as an offering can only be made after the filing of a disclosure statement with the BC Financial Services Authority, and only in jurisdictions where qualified in accordance with applicable local laws. For a copy of the disclosure statement, please contact Ray Longmuir of Whistler Real Estate Ltd. at 1.800.667.2993. E. & O. E.

1360

MOUNT FEE ROAD

FOURTH FLOOR PLAN

NORTH



CHEAKAMUSCROSSING.COM

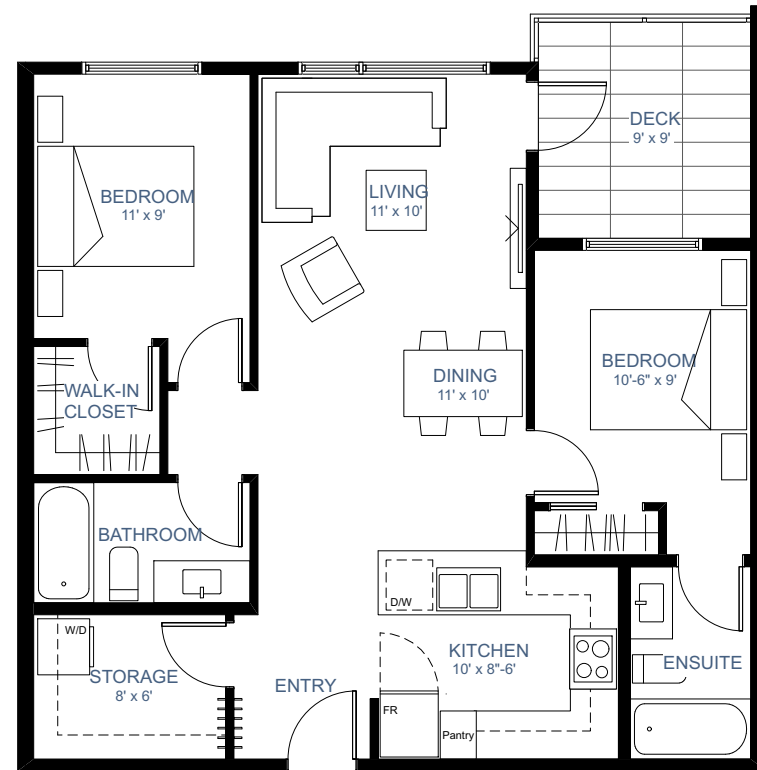
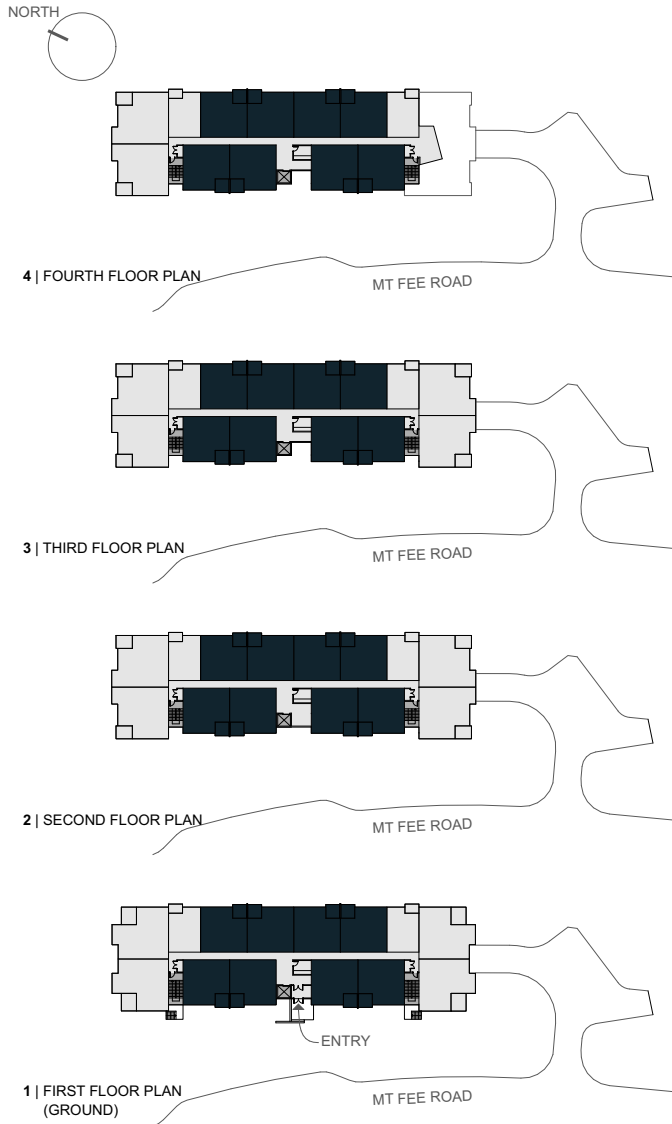
The developer reserves the right to make changes and modifications to the information contained herein. Maps, views, photography and renderings are representational only and are not necessarily accurate, and final design, construction and features may differ. Floor plans, areas, layouts, finishes, prices and availability are subject to change without notice. This is not an offering for sale as an offering can only be made after the filing of a disclosure statement with the BC Financial Services Authority, and only in jurisdictions where qualified in accordance with applicable local laws. For a copy of the disclosure statement, please contact Ray Longmuir of Whistler Real Estate Ltd. at 1.800.667.2993. E. & O. E.

1360

MOUNT FEE ROAD

821 SQ. FT.
2 BEDROOMS
2 BATHROOMS

A



UNIT AREA 821 SQ. FT.

CHEAKAMUSCROSSING.COM

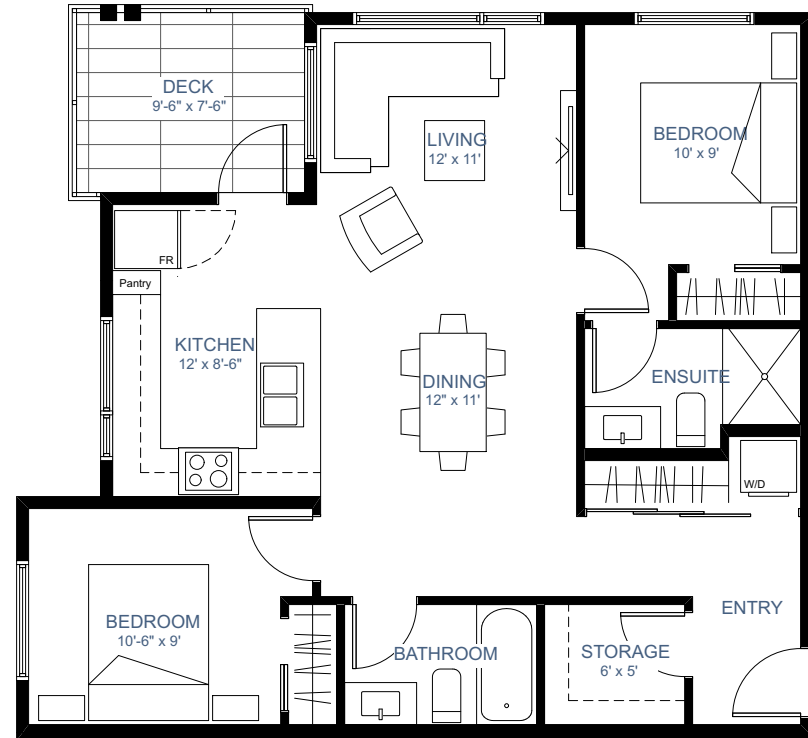
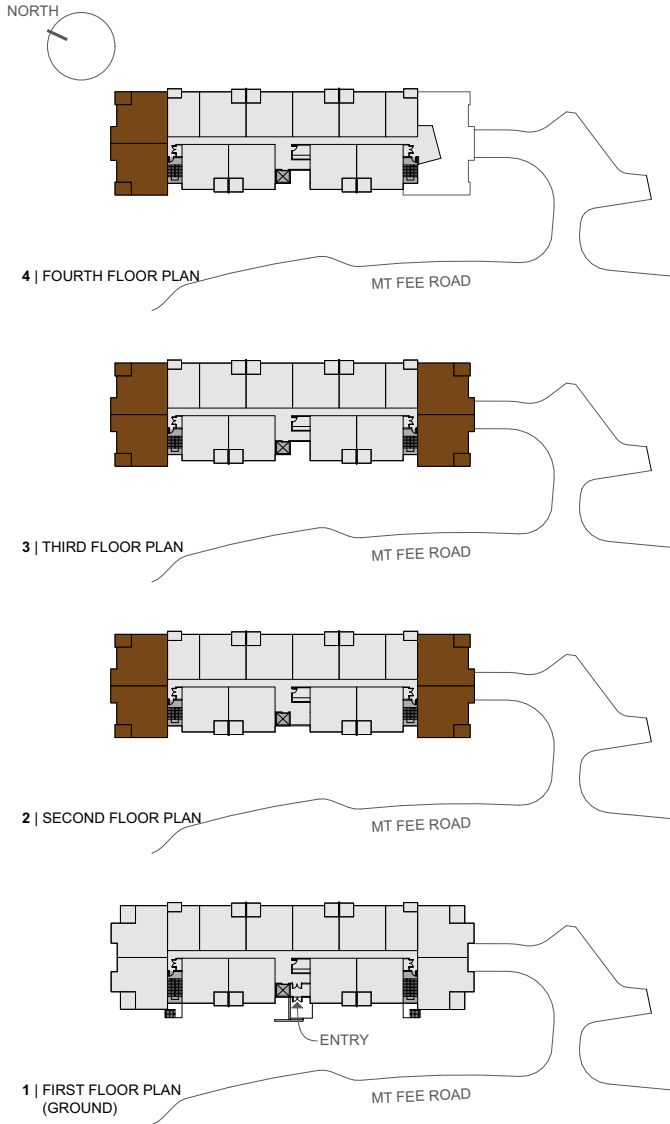
The developer reserves the right to make changes and modifications to the information contained herein. Maps, views, photography and renderings are representational only and are not necessarily accurate, and final design, construction and features may differ. Floor plans, areas, layouts, finishes, prices and availability are subject to change without notice. This is not an offering for sale as an offering can only be made after the filing of a disclosure statement with the BC Financial Services Authority, and only in jurisdictions where qualified in accordance with applicable local laws. For a copy of the disclosure statement, please contact Ray Longmuir of Whistler Real Estate Ltd. at 1.800.667.2993. E. & O. E.

1360

MOUNT FEE ROAD

855 SQ. FT.
2 BEDROOMS
2 BATHROOMS

B



UNIT AREA 855 SQ. FT.

CHEAKAMUSCROSSING.COM

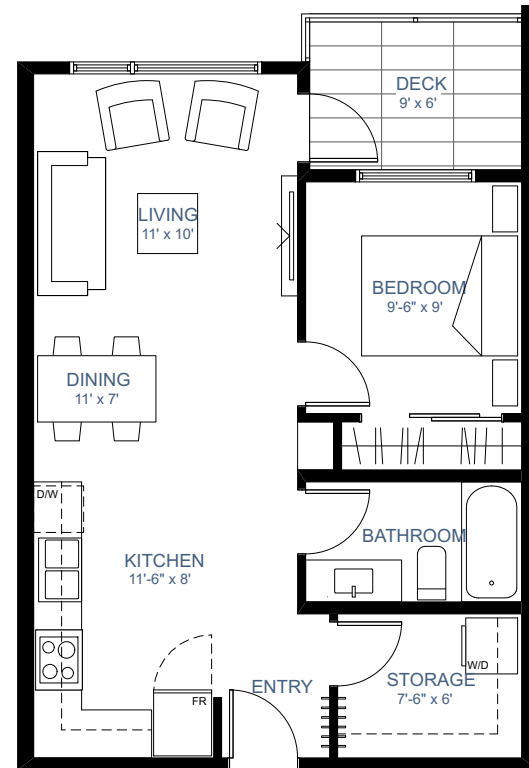
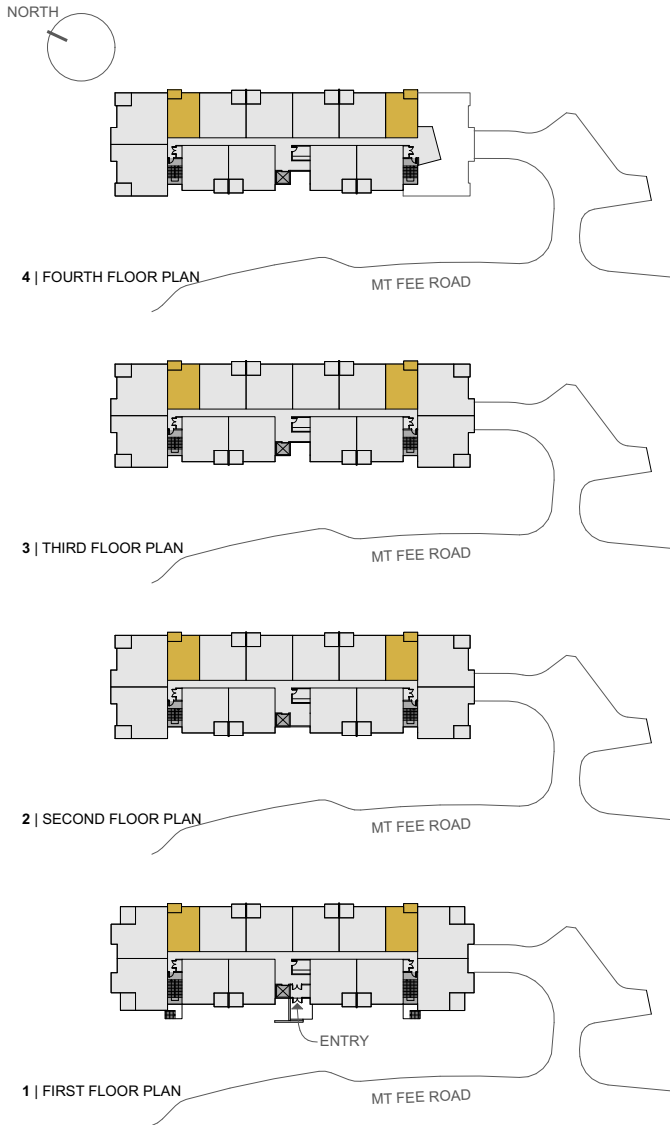
The developer reserves the right to make changes and modifications to the information contained herein. Maps, views, photography and renderings are representational only and are not necessarily accurate, and final design, construction and features may differ. Floor plans, areas, layouts, finishes, prices and availability are subject to change without notice. This is not an offering for sale as an offering can only be made after the filing of a disclosure statement with the BC Financial Services Authority, and only in jurisdictions where qualified in accordance with applicable local laws. For a copy of the disclosure statement, please contact Ray Longmuir of Whistler Real Estate Ltd. at 1.800.667.2993. E. & O. E.

1360

MOUNT FEE ROAD

572 SQ. FT.
 1 BEDROOM
 1 BATHROOM

C



UNIT AREA 572 SQ. FT.

CHEAKAMUSCROSSING.COM

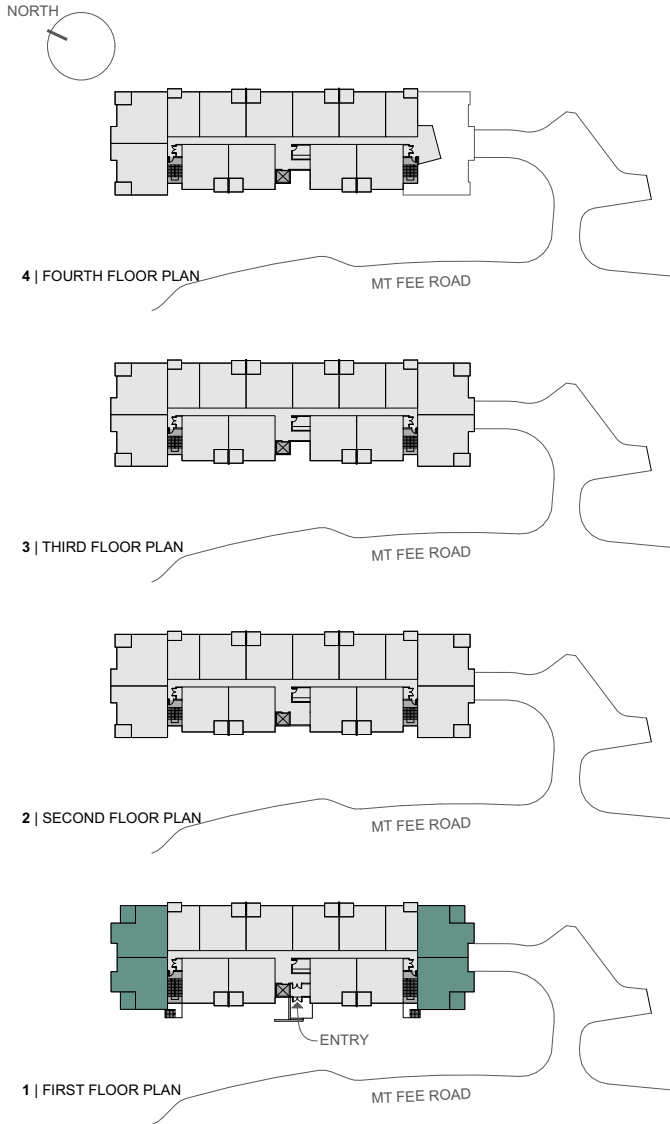
The developer reserves the right to make changes and modifications to the information contained herein. Maps, views, photography and renderings are representational only and are not necessarily accurate, and final design, construction and features may differ. Floor plans, areas, layouts, finishes, prices and availability are subject to change without notice. This is not an offering for sale as an offering can only be made after the filing of a disclosure statement with the BC Financial Services Authority, and only in jurisdictions where qualified in accordance with applicable local laws. For a copy of the disclosure statement, please contact Ray Longmuir of Whistler Real Estate Ltd. at 1.800.667.2993. E. & O. E.

1360

MOUNT FEE ROAD

1,046 SQ. FT.
3 BEDROOMS
2 BATHROOMS

D



UNIT AREA 1,046 SQ. FT.

CHEAKAMUSCROSSING.COM

The developer reserves the right to make changes and modifications to the information contained herein. Maps, views, photography and renderings are representational only and are not necessarily accurate, and final design, construction and features may differ. Floor plans, areas, layouts, finishes, prices and availability are subject to change without notice. This is not an offering for sale as an offering can only be made after the filing of a disclosure statement with the BC Financial Services Authority, and only in jurisdictions where qualified in accordance with applicable local laws. For a copy of the disclosure statement, please contact Ray Longmuir of Whistler Real Estate Ltd. at 1.800.667.2993. E. & O. E.